

Fire Alarm Call Points, Hazardous Location BG and PB



Description:

These manual fire alarm call points have been designed for use in hazardous locations and harsh environmental conditions. The GRP enclosures are suitable for use offshore or onshore, where light weight combined with a high level of corrosion resistance is required.

Features*:

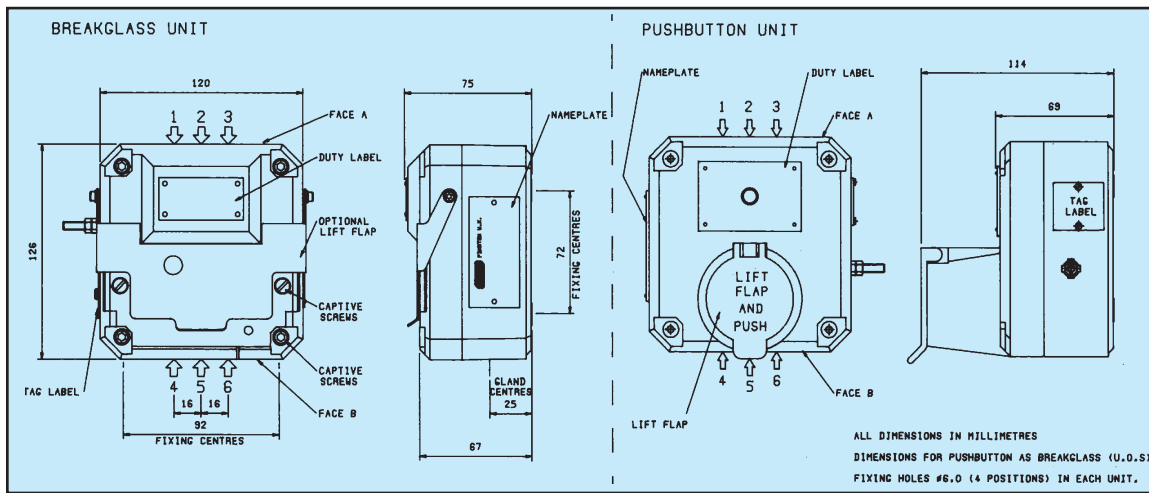
- UL Listed for USA and Canada
 - Hazardous locations:
 - Class I, Div 2, Groups A, B, C & D
 - Class II, Div 2, Groups F & G
 - Class I, Zones 2
 - Ordinary locations: Fire Alarm Boxes
 - California State Fire Marshal (CSFM) Listed
 - ATEX approved
 - CSA Certified
 - NEMA 4x & 6, IP66 and IP67
 - Certified temperature –13°F to +131°F (–25°C to +55°C)
 - Corrosion resistant GRP
 - Plastic break glass element available
 - Retained stainless steel cover screws
 - Optional lift flap
 - Key operated test facility on BG
 - In-line and fitted end of line resistors
 - Optional LED to indicate operation
- * Depending on version
* NFPA 72

Architects and Engineers Specifications

Fire alarm call points and push buttons for hazardous locations and harsh environments shall be UL Listed for Class I, Division 2, Groups A,B,C&D, and Class I, Zone 1&2 applications. They shall be constructed of lightweight, UV stable glass reinforced polyester, shall be corrosion resistant, and shall meet NEMA 4x, NEMA 6, IP 66 & IP 67 environmental requirements over a temperature range of -13°F to +131°F (-25°C to +55°C). (Model dependent)

Actuation of the call point or push button shall require the opening of a flap and depression of an actuator. An actuated unit shall remain latched until reset. A reset operation shall only take place through the use of a key.

Note: Due to continuous development of our products, specifications and offerings are subject to change without notice in accordance with Cooper Wheelock standard terms and conditions.



Specification

Certification:	UL Listed for USA and Canada – Hazardous locations: Class I, Div 2, Groups A-D, Class I, Zones 2 Class II, Div 2, Groups F & G. Listing No: E186629 – Ordinary locations: Fire Alarm Box Listing No. S8117. California State Fire Marshal (CSFM) Listed CSA Certified to C22.2 (PB only), Nos. 0-M, 0.4M, 14-M, 25,30-M, 94, 142-M 1987, 157M 1987, 157-92, Enclosure Type 4, 4A, Class 1, Groups A-D, Cert. No. 79120. ATEX Approved: EN50014, EN50018, EN50019, EN50028. Cert. No. BAS02ATEX2105X (BG & PB), EExed II C T6 (switch only), EExedm IIC T4 (other versions).	Terminals:	6 x 14 AWG standard (BGUL), 7 or 9 x 14 AWG standard.
Voltage:	Up to 240V.	Switch Rating	(1 or 2 changeover switches fitted): Max Rating 240VAC, 3A.
Certified temp:	BGUL: -13°F to +131°F (-25°C to + 55°C); PBUL: -13°F +131°F (-25°C to +55°C). PB (CSA): -58°F to +104°F (-50°C to +40°C).	Cable Entries:	Up to 4 entries 1/2" NPT.
Ingress Protection:	NEMA 4x & 6, IP66 & 67.	Weight:	2.6 lb/1.2kg (Varies with model & entries).
		Material:	Glass reinforced polyester.
		Finish:	Red epoxy painted finish as standard or to Customer's specification.
		Resistors:	Various configurations available on versions up to 24V, 470R minimum.
		LED Indication:	A high intensity red LED can be fitted as an optional extra to indicate operation on versions up to 24V.
		Labelling:	BG Glass label – reads either (1) Fire Break glass – press here. (2) Break glass – press here. (3) Worded to Client's requirements. PB & BG Duty label – worded to Client's requirements. Riveted on. PB & BG Tag label – worded to Client's requirements. Screwed on.

Configuration Options:

Model	Certification	Entries	Labels	Switches	Features	Terminals	Finish	
Model	Entries	Code	Labels	Code	Features	Code	Finish	Code
BG	1/2" NPT	*C	None	0	None	N	Red (Standard)	R
PB	*Prefix entry size (see diagram above) with entry position code e.g. 1C, 3C.		Glass label (1) reqd.	1	LED	A	Natural Black	N
			Glass label (2) reqd.	2	Lift Flap (BG only)	B	Blue	B
			Glass label (3) reqd.	3	Resistor Series	*C	Yellow	Y
			Duty label reqd.	4	Resistor EOL	*D	Grey	G
			Tag label reqd.	5	Break glass	P	Yellow/Black	
			Specify wording on 3, 4 or 5 as required.		*Specify values		Stripes	X
					Earth Continuity	F	Other – specify	S
					Self Reset(PB only)	M		
Certification	Code			Switches	Code	Terminals	Code	
CSA – Certified*	IC			Single changeover	*S	*6 x 14 AWG (standard)	6	
UL Listed	UL			Double changeover	*D	7 x 14 AWG (standard)	7	
UL - Ordinary locations	UW			*Prefix with voltage		9 x 14 AWG (optional)	9	
				A for A.C. – D for D.C.				*BGUL only

*PB model only

Note: When placing your order, please include Supervision Diode on products.



WE ENCOURAGE AND SUPPORT NICET CERTIFICATION
 3 YEAR WARRANTY
 BG and PB 08/11

NJ Location
 273 Branchport Ave.
 Long Branch, NJ 07740
 P: 800-631-2148
 F: 732-222-8707
 www.coopernotification.com